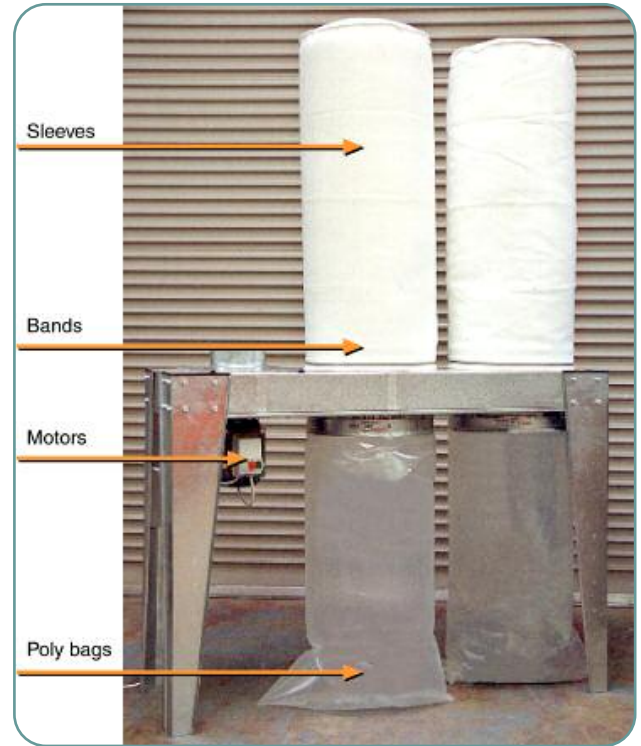


## Sleeves, Bands, Motors and Poly Bags

The performance of this simple type of filter/collector can be substantially improved by increasing the size of the filter sleeves to allow a low air velocity through the filters. Matching the type and weight of filter material is equally important as filter fabric slowly blocks, increasing the resistance to filtration resulting in reduced extraction rates. We can supply the correct type and size of replacement filters to ensure you get optimum performance from your filter/collector. We also supply other parts as shown that may require replacing from time to time, as well as the polythene collection bags in a variety of bag sizes.



### Polythene Collections Bags:

Size 800/1200	To suit spigot sizes up to $\varnothing$ 510mm x bag length of 1200mm
Size 800/1500	To suit spigot sizes up to $\varnothing$ 510mm x bag length of 1500mm
Size 900/1350	To suit spigot sizes up to $\varnothing$ 575mm x bag length of 1350mm

(All bags are 100 micron gauge manufactured from virgin materials)

### Filter Replacement Sleeves:

Available in any size from  $\varnothing$ 80mm to  $\varnothing$ 1200 to any required length, in different textile fabrics with coatings to suit specific dusts and environments.

# Filter Spares and Consumables

Filter Spares and Consumables Datasheet 2

## Service Items

Reverse Jet Filters are more complex than simple collectors and benefit from regular inspection and maintenance. We can supply replacement parts for most filters including service kits and replacement diaphragm valves, electronic controllers, filter sleeves and cages.

Replacement Fan/Motors

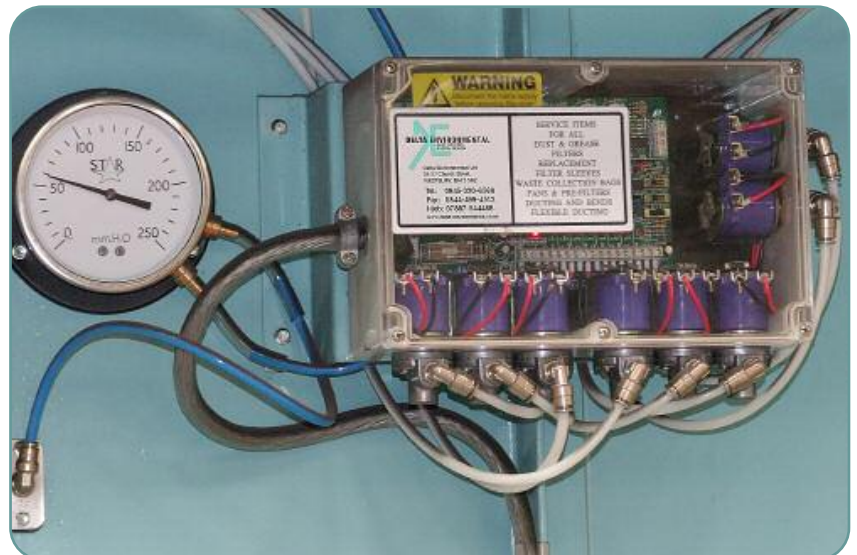
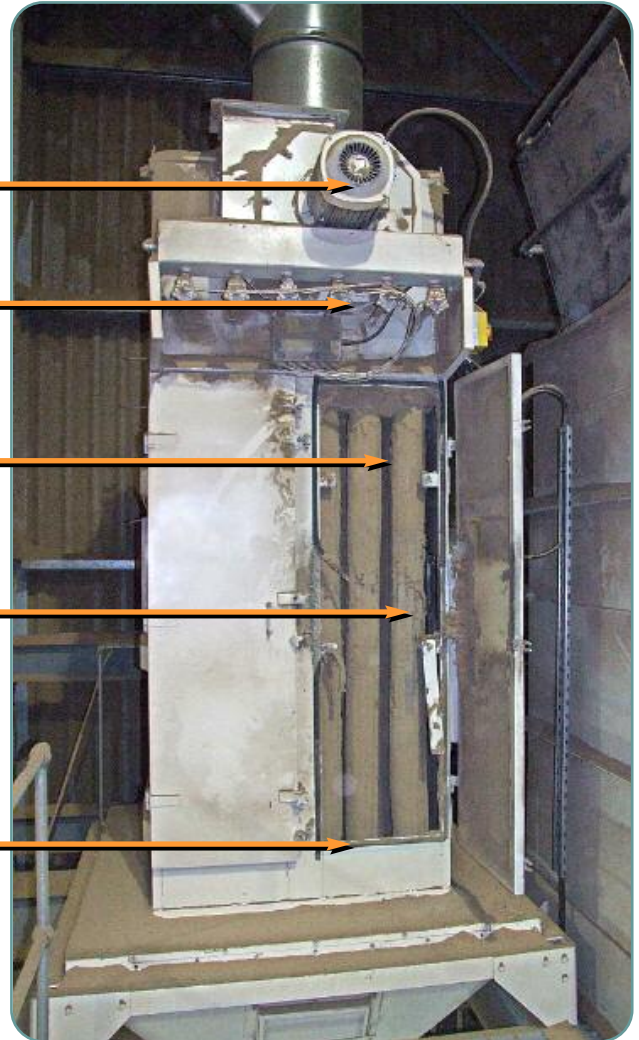
Service parts for valves

Replacement Filter cages

Replacement Filter sleeves

Door seals

View of old RJ Filter

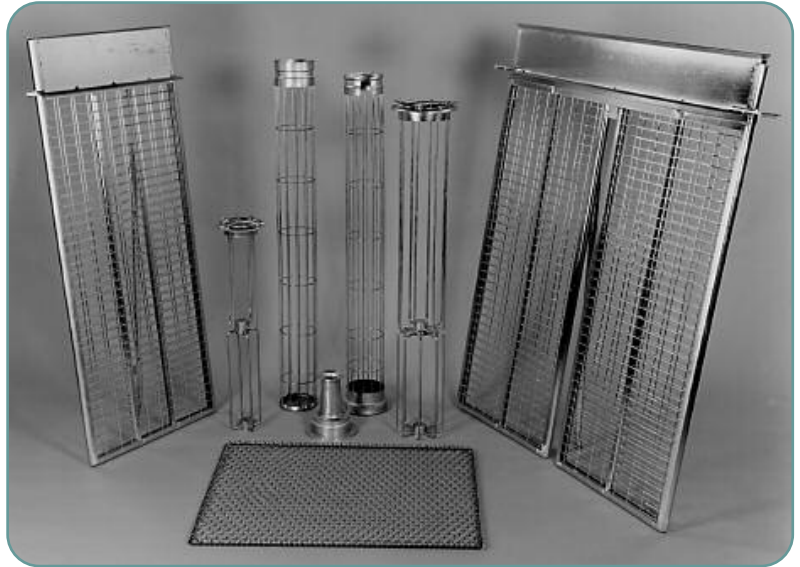


### Filter Bag Cages and Air Venturi's

A wide variety of cage sizes and styles to match almost all known filter manufacturers. Cages manufactured in mild steel or stainless steel in 'screw-together-sections' to suit individual filters.

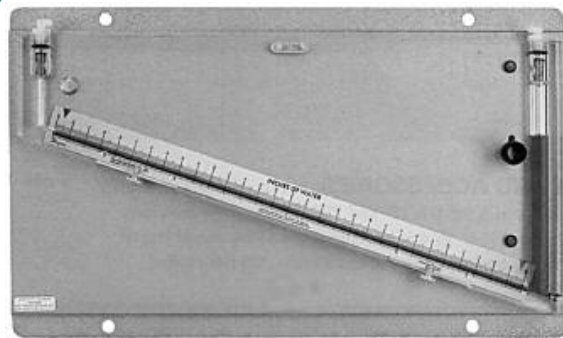
We can match samples when required for both cage style and top sealing plate arrangement.

- Ø3.25mm Stainless Steel or Mild Steel wire
- Zinc plated option for Mild Steel wire
- '12' wire longitudinal construction available for better cloth support
- Sealing collar to suit sample/original design
- Strong radial rings at 150mm spacing
- Cages up to 4750mm one piece length



### Air Measuring Instruments

**Static Pressure**  
On many fan installations this measurement can provide instant 'at a glance' confirmation that the fan/system is operating correctly or within design parameters. Ideal for dust control systems, pneumatic conveying and crop drying applications. Can be used for both vacuum and pressure applications.



Water or oil filled inclined Manometer for pressure-vacuum readings

Water or oil filled Manometer for pressure-vacuum readings



Mounting plate for tube connection

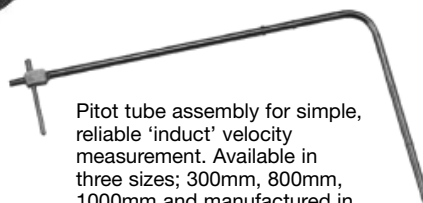


Threaded adaptor with ferrules to adapt 6mm PVC tube to mounting plate



Dial gauge for simple pressure, vacuum or pressure drop readings

Magnahelic gauge for pressure, vacuum, pressure drop. Also for taking velocity readings when used in conjunction with a Pitot tube



Pitot tube assembly for simple, reliable 'in-duct' velocity measurement. Available in three sizes; 300mm, 800mm, 1000mm and manufactured in grade 304 stainless steel



PVC 6mm tubing to connect gauge to fan or plenum/duct